

AN ORDINANCE AMENDING THE FRANKLIN COUNTY COMPREHENSIVE PLAN TO CHANGE THE PERMITTED LAND USE OF 6.18 ACRES IN SECTION 10, TOWNSHIP 7 SOUTH, RANGE 5 WEST, FROM A-2 FORESTRY AGRICULTURE DISTRICT TO R-1 SINGLE FAMILY RESIDENTIAL.

**ORDINANCE 2001- 17
FRANKLIN COUNTY, FLORIDA**

WHEREAS, the Board of County Commissioners of Franklin County, Florida has received a recommendation from the Franklin County Planning and Zoning Commission for changing the land use of a certain parcel of private real property, and

WHEREAS, the Board of County Commissioners of Franklin County has conducted a public hearing with due public notice,

NOW, THEREFORE, BE IT ORDAINED BY THE FRANKLIN COUNTY BOARD OF COUNTY COMMISSIONERS that:

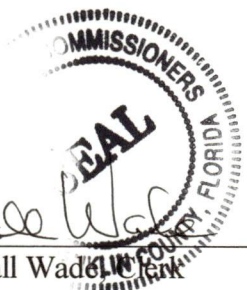
The permitted land use of 6.18 acres in Section 10, Township 7 South, Range 5 West, as shown on the attached map and described in attachment A, is changed from A-2 Forestry Agriculture to R-1 Single Family Residential.

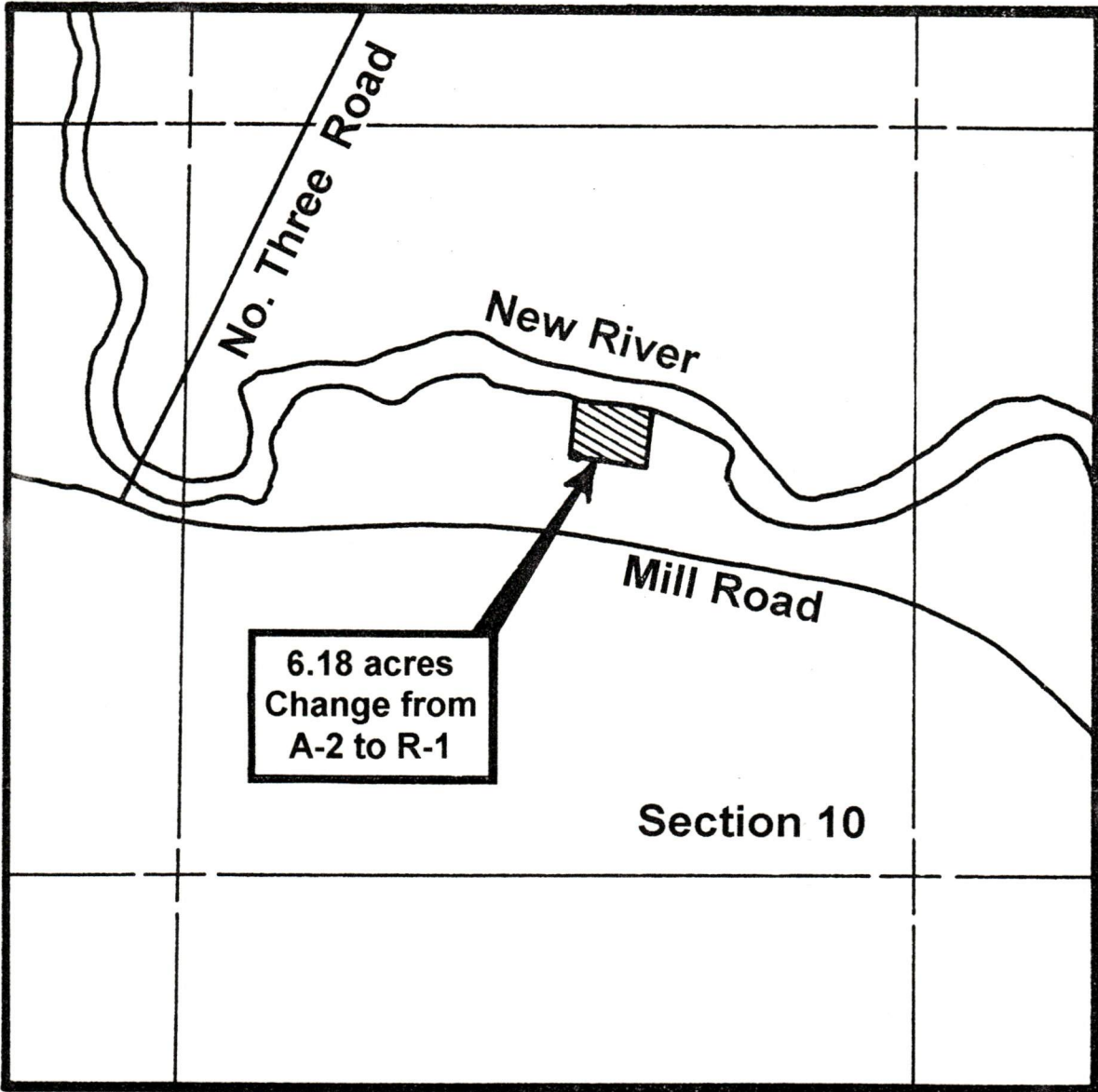
This Ordinance adopted this 21st day of August, 2001, in a regular meeting of the Franklin County Board of County Commissioners after notice was duly given, and pursuant to Chapter 163, Florida Statutes.

THE FRANKLIN COUNTY BOARD
OF COUNTY COMMISSIONERS

BY: Eddie Creamer
Eddie Creamer, Chairman

ATTEST: Kendall Wade
Kendall Wade, Clerk

The seal is circular with a dotted border. The text "COMMISSIONERS" is at the top, "FRANKLIN COUNTY, FLORIDA" is at the bottom, and "SEAL" is in the center.



Edwin G. Brown & Associates, Inc.

SURVEYORS • MAPPERS • ENGINEERS


April 5, 2001
(Revised: May 10, 2001)

6.18 ACRES

I hereby certify that this is a true and correct representation of the following described property and that this description substantially meets the minimum technical standard for land surveying (Chapter 61G17, Florida Administrative Code).

Commence at a concrete monument marking the Southeast corner of Section 14, Township 7 South, Range 5 West, Franklin County, Florida, and thence run North along East boundary of said Section 14, a distance of 1537.74 feet to the centerline of a 60.00 foot county road, thence run along said centerline as follows: North 69 degrees 04 minutes 10 seconds West 60.98 feet to a point of curve to the right, thence Northwesterly along said curve with a radius of 1512.48 feet thru a central angle of 31 degrees 53 minutes 24 seconds for an arc distance of 841.82 feet, the chord of said arc being North 53 degrees 07 minutes 28 seconds West 831.00 feet to a compound curve, thence Northwesterly along said compound curve with a radius of 6095.91 feet thru a central angle of 14 degrees 04 minutes 14 seconds for an arc distance of 1498.31 feet, the chord of said arc being North 30 degrees 08 minutes 39 seconds West 1493.26 feet, thence North 23 degrees 06 minutes 32 seconds West 769.13 feet to a point of curve to the left, thence North-westerly along said curve with a radius of 2009.70 feet thru a central angle of 31 degrees 37 minutes 08 seconds for an arc distance of 1109.06 feet, thence North 54 degrees 43 minutes 40 seconds West 335.52 feet, thence leaving said centerline run North 35 degrees 15 minutes 48 seconds East 30.00 feet to the Northerly right-of-way boundary of said county road, thence run along said Northerly right-of-way boundary as follows: North 54 degrees 43 minutes 40 seconds West 526.32 feet, thence North 52 degrees 17 minutes 34 seconds West 1036.35 feet, thence North 53 degrees 13 minutes 19 seconds West 756.96 feet, thence North 57 degrees 44 minutes 46 seconds West 455.75 feet, thence North 62 degrees 16 minutes 13 seconds West 431.81 feet, thence North 75 degrees 54 minutes 48 seconds West 284.39 feet, thence North 83 degrees 16 minutes 27 seconds West 373.71 feet, thence North 79 degrees 40 minutes 36 seconds West 1668.48 feet, thence North 82 degrees 12 minutes 43 seconds West 325.76 feet, thence leaving said right-of-way boundary run North 07 degrees 49 minutes 27 seconds East 525.40 feet to the POINT OF BEGINNING. From said POINT OF BEGINNING continue North 07 degrees 49 minutes 27 seconds East 435.60 feet to the Southeasterly edge of New River, thence run along said river's edge as follows: South 85 degrees 54 minutes 51 seconds East 151.83 feet, thence South 82 degrees 29 minutes 57 seconds East 244.40 feet, thence South 77 degrees 25 minutes 41 seconds East 199.36 feet, thence South 76 degrees 09 minutes 53 seconds East 5.44 feet, thence leaving said river's edge run South 07 degrees 49 minutes 27 seconds West 442.03 feet, thence run North 81 degrees 00 minutes 31 seconds West 600.12 feet to the POINT OF BEGINNING containing 6.18 acres, more or less.

The undersigned surveyor has not been provided a current title opinion or abstract of matters affecting title or boundary to the subject property. It is possible there are deeds of records, unrecorded deeds, easements or other instruments which could affect the boundaries.


DONNIE R. SPARKMAN
Surveyor & Mapper
Florida Certificate No. 5147
(LB 6475)

00-288PSC:19419

CAOFFICE\LEGALS\19419.5