

AN ORDINANCE REZONING A 6 ACRE PARCEL LYING IN SECTION 13,
TOWNSHIP 7 SOUTH, RANGE 5 WEST, 423 MILL ROAD, CARRABELLE,
FRANKLIN COUNTY, FLORIDA FROM A-2 FORESTRY AGRICULTURE TO R-1
SINGLE FAMILY RESIDENTIAL.

ORDINANCE 2008-08
FRANKLIN COUNTY, FLORIDA

WHEREAS, the Board of County Commissioners of Franklin County, Florida has received a recommendation from the Franklin County Planning and Zoning Commission for rezoning certain private real property, and

WHEREAS, the Board of County Commissioners of Franklin County has conducted a public hearing with due public notice,

NOW, THEREFORE, BE IT ORDAINED BY THE FRANKLIN COUNTY BOARD OF COUNTY COMMISSIONERS that:

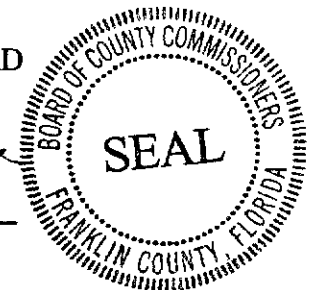
A 6 acre parcel lying in Section 13, Township 7 South, Range 5 West, 423 Mill Road, Carrabelle, Franklin County, Florida be rezoned from A-2 Forestry Agricultural to R-1 Single Family Residential.

Legal Description and Map attached as Exhibit A.

This Ordinance adopted this 18th day of March, 2008, in a regular meeting of the Franklin County Board of County Commissioners after giving notice of intent to adopt it as a rezoning of less than 5% of the County. This Ordinance shall take effect when notice of receipt of a certified copy of same is returned from the Florida Secretary of State

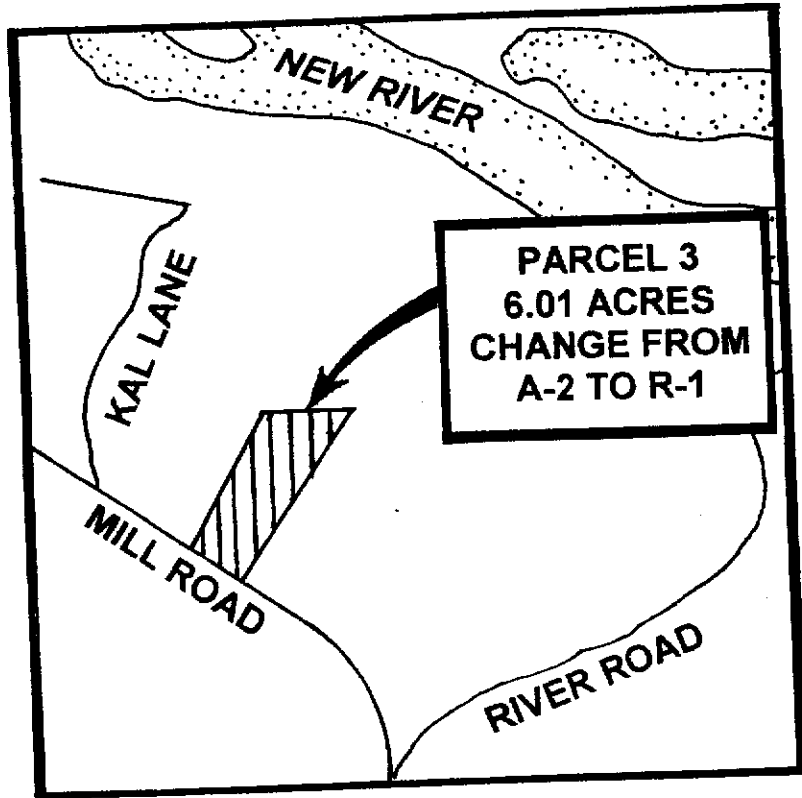
THE FRANKLIN COUNTY BOARD
OF COUNTY COMMISSIONERS

BY: Noah Lockley, Jr.
Noah Lockley, Jr., Chairman



ATTEST: Marcia M. Johnson
Marcia M. Johnson, Clerk

STATE OF FLORIDA, COUNTY OF FRANKLIN
I HEREBY CERTIFY that the above and foregoing
is a true and correct copy of an instrument
in the official records of FRANKLIN COUNTY, FLORIDA
Witness my hand and seal of office this 19 day
of MARCH 2008
MARCIA M. JOHNSON
CLERK OF CIRCUIT COURT
by Michael M. ... D.C.



LEGAL DESCRIPTION OF: SIX ACRE TRACT / REZONE AREA

Commence at the Southwest corner of Section 13, Township 7 South, Range 5 West, Franklin County, Florida and run North 1828.93 feet, thence run North 89° 59' 22" East 2199.40 feet, thence run South 00° 01' 36" West 487.98 feet to a point lying on the Northeasterly right-of-way boundary of a county graded dirt road, thence South 58° 03' 12" East along said right-of-way boundary 546.74 feet to a concrete monument (marked #4262), thence continue South 58° 02' 12" East along said right-of-way boundary 294.90 feet to a concrete monument (marked #4261) marking the POINT OF BEGINNING.

From the POINT OF BEGINNING; thence, North 27° 30' 19" East for a distance of 663.48 feet, thence, North 87° 07' 24" West 442.92 feet, thence, S 33° 01' 17" W for a distance of 914.58 feet, thence, North 58° 03' 12" West for a distance of 295.07 feet to the POINT OF BEGINNING.

Containing 6.01 Acres