

AN ORDINANCE AMENDING THE FRANKLIN COUNTY COMPREHENSIVE PLAN TO CHANGE THE PERMITTED LAND USE OF A PARCEL OF PRIVATE REAL PROPERTY IN SECTION 31, TOWNSHIP 8 SOUTH, RANGE 6 WEST FROM RESIDENTIAL TO COMMERCIAL.

**ORDINANCE 98- 8
FRANKLIN COUNTY, FLORIDA**

WHEREAS, the Board of County Commissioners of Franklin County, Florida has received a recommendation from the Franklin County Planning and Zoning Commission for changing the land use of a certain parcel of private real property, and

WHEREAS, the Board of County Commissioners of Franklin County has conducted a public hearing with due public notice,

NOW, THEREFORE, BE IT ORDAINED BY THE FRANKLIN COUNTY BOARD OF COUNTY COMMISSIONERS that:

The permitted land use of the following described parcel of private real property, as shown on the attached map, is changed from Residential to Commercial.

Commence at a point on the Northerly boundary of the 100 foot right-of-way of U.S. Highway #319 located 554 feet North (true meridian) of the Southeast corner of the Northwest Quarter of Section 31, Township 8 South, Range 6 West, and run thence South 86 degrees 53 minutes West along said highway boundary a distance of 500 feet; thence run along the West boundary of the 100 foot street (Washington) a distance of 300 feet to the POINT OF BEGINNING. From said Point of Beginning run thence South 86 degrees 53 minutes West along the boundary of the 100 foot easement right-of-way to the Florida Power Corporation a distance of 200 feet; thence run North a distance of 211 feet; thence run East a distance of 199.5 feet; thence run South a distance of 200 feet to the Point of Beginning. Thus forming a tract in the Northwest Quarter of said Section 31.

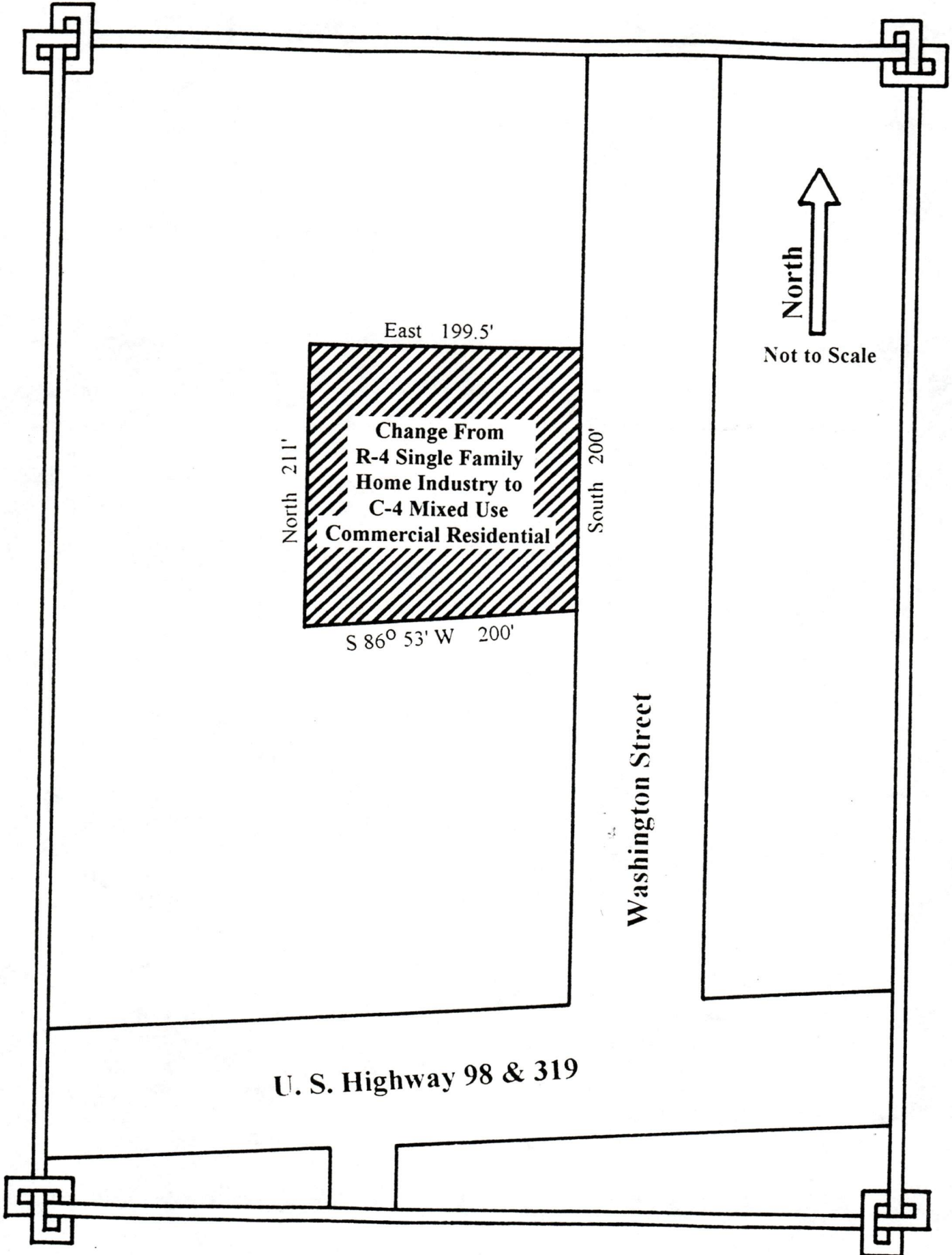
This Ordinance adopted this 3rd day of March, 1998, in a regular meeting of the Franklin County Board of County Commissioners after notice was duly given, and pursuant to Chapter 163, Florida Statutes. This Ordinance shall take effect when notice of receipt of a certified copy of same is returned from the Secretary of State.



Randall Wade, Clerk

THE FRANKLIN COUNTY BOARD OF
COUNTY COMMISSIONERS

BY Raymond Williams
Chairman



East 199.5'

North 211'

South 200'

S 86° 53' W 200'

**Change From
R-4 Single Family
Home Industry to
C-4 Mixed Use
Commercial Residential**

North

Not to Scale

Washington Street

U. S. Highway 98 & 319